



Gain flexibility and mobility. Increase process reliability.

Integrity Test System



Trolley System including Sartochek 3 EPS

The system consists of the integrity tester, Sartochek 3 EPS, on top of a trolley. The Trolley System includes the equipment needed for automatic Water Intrusion Testing, e.g., pressure tank for the test water, pneumatically controlled valves, PLC.

Mobile | easy-to-use system

It is easy to move the system right to where the filters to be tested are located. Only the tubing for filling as well as the external pressure transducer need to be connected to the filter housing.

High process reliability

The entire filter test procedure is performed completely automatically by the Trolley System as follows:

- The filter housing is filled with test water
- The test is carried out according to the Water Intrusion Test Method
- The tested housing is drained
- Once the test has been completed and passed, the tubing and the external pressure transducer can be disconnected from the filter system.
- The tested filter system is now ready to use in production.

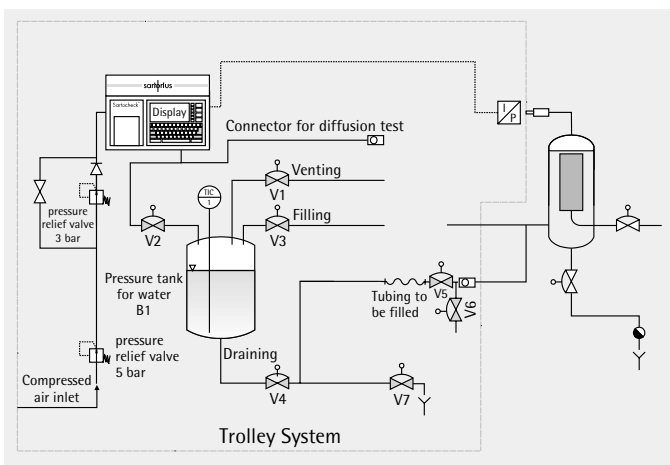
Flexibility

Besides automatic WIT, the system can also be used for standard integrity testing of hydrophilic filters by the Diffusion and Bubble Point Tests.

Sanitary design

Ideal for bio-, pharmaceutical production, the internal pressure vessel and the piping for water are steam-sterilisable

Thanks to Sartorius' external pressure transducer technology, there are no longer any limitations concerning the distance between the filter housing and the integrity test system. The Sartochek 3 EPS features an external pressure transducer that is conveniently located directly on top of the housing. It uses this transducer to control the initial pressure accurately according to the value entered.



Set-up of the Trolley System

Technical specifications

Electrical

Power requirements	110 230 V AC, 50 60 Hz
Power input	500 VA
Fuse protection	max. 10 A

Pneumatic

Inlet compressed air	min. 5 bar max. 10 bar
Connection	Stäubli RBE03/male

Steam | test water

Steam inlet temperature	max. 134°C
Steam inlet pressure	max. 2 bar
Test water inlet temperature	max. 30°C
Test water inlet pressure	max. 4 bar
Connection	Sanitary DN ISO 8 Ø 50.5 mm
External valve connection	Stäubli RBE06 OD male
External pressure transducer	Stäubli RBE03 OD female
Dimensions	650 × 450 × 800 mm
Material pressure vessel and piping	ANSI 316L

Ambient operating conditions

Temperature	+15°C to +30°C
Rel. humidity	15 to 95% (indoors) no condensation

Equipment supplied

Integrity Test "Trolley System" (without Sartocheck 3 EPS)	17005A---L--4708
External valve box (valve for draining and filling) including connectors and tubing	
PLC, SIMATIC	
Temperature sensor	
Level sensor	
Diaphragm valves	
Pressure tank, 20 l	
Documentation	

Sartorius AG
Weender Landstrasse 94–108
37075 Goettingen, Germany

Phone +49.551.308.0
Fax +49.551.308.3289

www.sartorius.com

USA +1.631.2544274
UK +44.1372.737100
France +33.1.69192100
Italy +39.055.634041
Spain +34.91.3586100
Japan +81.3.33293366

Specifications subject to change without notice.
Printed in Germany on paper that has been
bleached without any use of chlorine
W/sart · G
Publication No.: SPI2006-e02053
Order No.: 85030-511-43