



## Filter Cartridge Housings for the Pharmaceutical Industry.

Modular system for stainless steel filter housings. Flexibility, quality, industry-compliant documentation.



## This is how you configure your housing.

We'll show you the variety of individual components that our modular system provides for you to combine and configure.

Just use the code numbers to select the elements you want.

Thanks to our modularly designed system software (M.D.S), you can review your housing selection right away and make changes, if necessary.

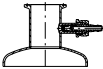
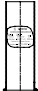
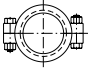
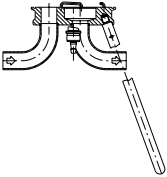
### Your filter housing will be composed of the following basic components:

- Top part of the housing with vent
- Housing bell (of the appropriate height)
- Gaskets (made of various materials)
- Clamp for filter housing lock (Tri-clamp)
- Housing base:
  - a) without condensate run-off valves
  - b) with condensate run-off valves (connecting pipes available in types compliant with DIN, ISO, BSOD).

- Fittings
- Extra valve options

**All filter housings are available in a choice of the following designs: T type, in-line type or L type.**

### Brief example:

Drawing	Modular Design Code	Technical Description
	BA001	<b>Fittings, general:</b> Clamp 50.5 mm Pipe: 38.1 mm x 1.65 mm <b>Side fittings:</b> New pharma valve (PTFE tip, silicone O-ring)
	Bell height BB0H0 BB0H1 BB0H2 BB0H3 BB0H4	Pipe: 101.6 mm x 2.0 mm TC 119.0 mm Housing bell for: 5" filter cartridges 10" filter cartridges 20" filter cartridges 30" filter cartridges 40" filter cartridges
	BC0K2	2-piece joint clamp with 2 hexagon nuts, 119.0 mm, (4") Temp.: -10...+150°C Pressure: +10 bar (limited by housing)
	BE004 BE005 BE006	Base plate adapter 25 • with removable legs • without vent valve Pipe dimensions: BSOD 1": 25.4 mm x 1.65 mm DIN DN 25: 29.0 mm x 1.5 mm ISO DN 25: 33.7 mm x 2.0 mm

## The Sartorius Modular System. Filter housings with certified quality you can rely on.

The widest variety of configurations are possible when designing filter housings that meet the needs of the pharmaceutical industry.

That is why we have broken down the housing into its individual components.

This enables you to select the components you need and configure your housing on your own using our special software. Then we will manufacture your custom-designed housing in compliance with certified quality standards.

### You can choose from:

- different vent valves or units
- pipes according to DIN, ISO or BSOD
- connectors and clamps such as Tri-clamps, flanges, and threaded fittings according to all conventional standards.

### The standard we offer you:

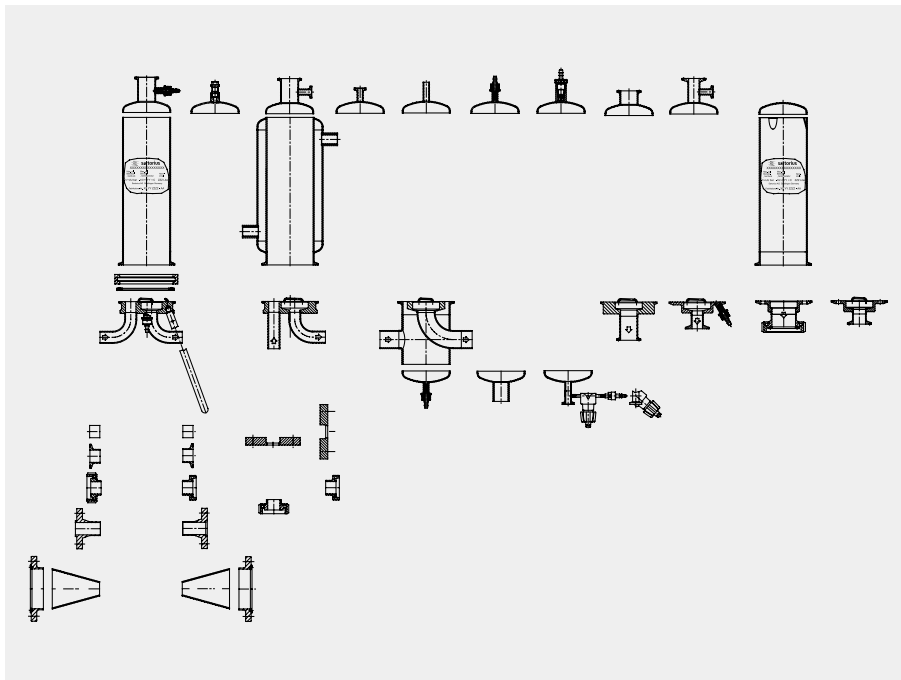
Material	AISI 316 L
Surfaces	Inner: Ra < 0.5 µm; Outer: Ra < 1.6 µm
Temperature range	-10...+150°C
Pressure range	-1...+10 bar
Adapters	Mini: 15; standard 10" cartridge: 25
Housing clamp lock	Sanitary clamp
Clamp gasket	Silicone (FDA)

### We manufacture your housing in compliance with certified quality standards.

We stock a sufficient number of all the individual components for the modular system. This guarantees that delivery will be prompt and that high quality standards are maintained.

Our standard documentation includes material certificates in compliance with EN 10204 3.1 B and FDA certificates of compliance for gasket materials.

Besides supplying you with all the modular system components you need, we will be happy to provide any other variations to customize your housing design.



## Modularly Designed System (M.D.S). The Sartorius software for drafting a complete modular housing.

Using our M.D.S. software, the final drawing of a modular, custom-configured housing can be produced within minutes. This drawing will also be used to prepare the cost estimate. After you have checked and approved the draft, the drawing will be sent on to our production department.

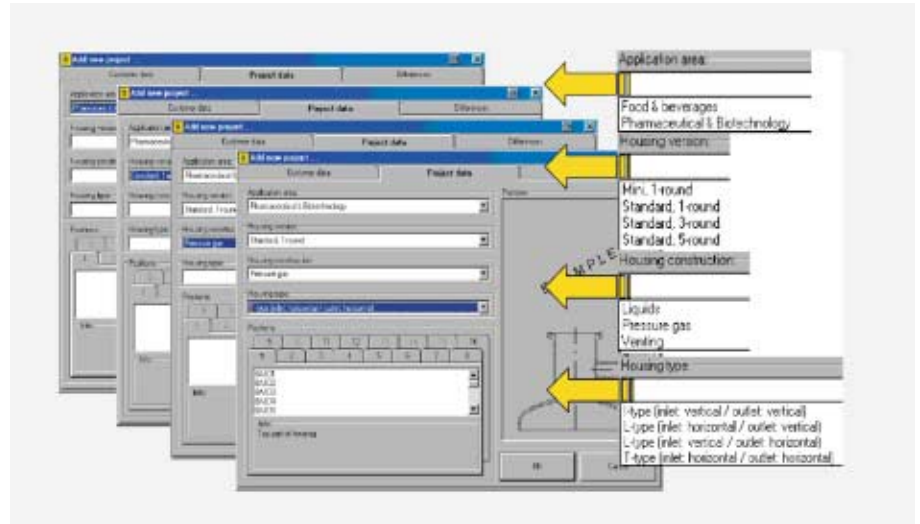
### Your added benefits:

- Fast configuration of your housing according to your needs
- Ability to review your housing on-site in the proper scale
- Quick order processing
- Prompt delivery
- Our software speaks your language: choose from English, French, German, Italian and Spanish

### Our service is better:

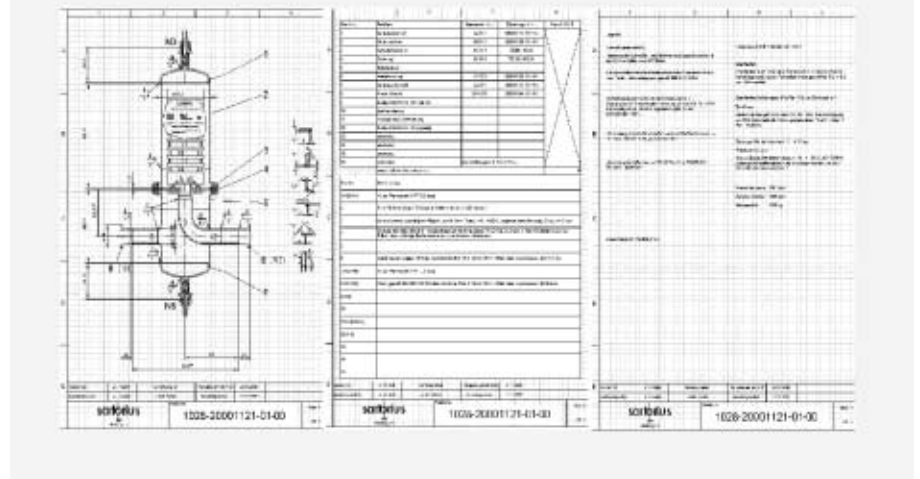
- Competent advice on-site
- Professional drawing based on your on-site specifications
- Better prices

### Add new project: Project data



### Add new project: Dimensional sheet display

Page 1 (Dimensional sheet)    Page 2 (Bill of materials)    Page 3 (Technical Information)



### You can choose from the following modular programs:

- Mini 1-round housing
- Standard 1-round housing
- Standard 3-round housing
- Standard 5-round housing

## Your Contact

Sartorius AG  
Weender Landstrasse 94-108  
37075 Goettingen, Germany

Mr. Theo Meyer  
Phone +49.551.308.1639

Phone +49.551.308.0  
Fax +49.551.308.3289

www.sartorius.com

Sartorius Corporation  
131 Heartland Boulevard,  
Edgewood, New York 11717, USA

Mr. Scott Rulewich  
Phone +1.631.254.4249

Phone +1.631.254.4274  
Fax +1.631.254.4253  
Toll-Free +1.800.3687178

Sartorius Limited  
Longmead Business Centre  
Blenheim Road, Epsom, Surrey  
KT199QN, Great Britain

Mr. Martin Kelly  
Phone +44.1204.853578

Phone +44.1372.737159  
Fax +44.1372.726171

Sartorius S.A.  
4, rue Emile Baudot  
91127 Palaiseau, France

Ms. Pascale Ballart  
Phone +33.1.6989285

Phone +33.1.69192100  
Fax +33.1.69200922

Sartorius S.p.A  
Via dell'Antella, 76/A  
50011 Antella (FI), Italy

Ms. Kerstin Talozzi  
Phone +39.055.5056822

Phone +39.055.634041  
Fax +39.055.6340526

Sartorius K.K.  
No. 3 Hoya Building 8-17  
Kamitakaido 1-chome  
Suginami-ku  
Tokyo 168-0074, Japan

Phone +81.3.33295533  
Fax +81.3.33295543

Sartorius S.A.  
C/Isabel Colbrand 10-12  
Edificio Alfa III  
planta 4, of. 121  
28050 Madrid, Spain

Phone +34.91.3586100  
Fax +34.91.3588804

Sartorius Ges.m.b.H.  
Franzosengraben 12  
1030 Wien, Austria

Ms. Irene Ortner  
Phone +43.1.796.576.314  
Fax +43.1.796.576.344

Sartorius Instrumenten B.V.  
Edisonbaan 22-24  
3439 MN Nieuwegein

Mr. Eric Overway  
Phone +31.30.602.5082

Phone +31.30.605.2872  
Fax +31.30.605.2917

Sartorius Australia Pty. Ltd.  
P.O. Box 8004  
104 Forntree Gully Road  
Unit 17, Waverley Business Park,  
Oakleigh, Vic. 3166, Australia

Mr. Lakshman Jayaram  
Phone +61.1800.645.076

Phone +61.3.9590.8800  
Fax +61.3.9590.8828

Sartorius Instruments N.V.  
Luchthavenlaan 3  
B-1800 Vilroorde

Mr. Christian Roquet  
Phone +32.2.7560.683

Phone +32.2.7560.680  
Fax +32.3.7560.681

Sartorius A/S  
Himmeler Bygade 49  
DK-4000 Roskilde

Ms. Tina Linders  
Phone +45.70.234400  
Fax +45.46.304030