



CERTOMAT[®] RM
With patented, adjustable
mass compensation

CERTOMAT® RM

With patented, adjustable mass compensation

The CERTOMAT® RM from Sartorius is the top-end shaker for laboratories world-wide.

Its patented, adjustable mass compensation allows high shaking speeds at high loads. In chemistry, this benchtop shaker allows to mix various liquids or to extract substances using phase separation methods. In microbiology, cells can be cultured at ambient temperature. For temperature control, our incubation hoods CERTOMAT® H or HK can be combined with the CERTOMAT® RM. This way bacteria and yeast cells can be grown in a temperature-controlled environment. Erlenmeyer flasks, reaction vials, Fernbach flasks or various bottles are fixed on the shaker using the clamps or mounting system provided.

Alternatively sticky tape can be used to hold light items in place during agitation.

The CERTOMAT® RM is available in 25 mm and 50 mm orbit models. The triple bearing, brushless drive belt assembly is strong, stable, and quiet even with heavy loads. Shaking speed and time functions are adjusted with a liquid-resistant, membrane keypad with the values indicated on the LCD.

The design accepts a broad range of clamp types including 25 ml to 5 l Erlenmeyer and Fernbach clamps, and test tube rack and universal mounting systems for odd shaped vessels. An analog output for external recording of speed is included. The integrated memory function re-establishes the last setpoint after power failure. Visual alarm warns the user of malfunction. The unit is built in accordance with the EN 61010 regulation.

Benefits

Adjustable mass compensation for optimum performance with large loads

Safe and easy tray fixation

25 mm or 50 mm orbit

Speed 40–400 rpm

Digital setting of time and speed

Analog out for shaker speed

Memory function

Complete range of CERTOMAT® accessories can be used

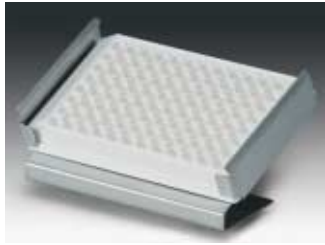
Can be combined with incubation hoods CERTOMAT® H/HK



Accessories



Reference	Description
	Tray type E (420×420 mm) equipped with stainless steel clamps for Erlenmeyer flasks
885 3533	39 clamps for flasks 100 ml
885 3568	20 clamps for flasks 250 ml
885 3584	14 clamps for flasks 500 ml
885 3606	9 clamps for flasks 1,000 ml
	Tray type E (420×420 mm) equipped with plastic clamps for Erlenmeyer flasks
885 3688	39 clamps for flasks 100 ml
885 3666	19 clamps for flasks 250 ml
885 3677	14 clamps for flasks 500 ml
	Tray type F (800×420 mm) equipped with stainless steel clamps for Erlenmeyer flasks
885 3738	74 clamps for flasks 100 ml
885 3762	40 clamps for flasks 250 ml
885 3789	26 clamps for flasks 500 ml
885 3800	15 clamps for flasks 1,000 ml
	Universal tray to be completed with clamps, racks or mounting system
885 3002	Type EU (420×420 mm)
885 3037	Type FU (800×420 mm)
	Stainless steel clamps for Erlenmeyer and Fernbach flasks (maximum number of clamps for tray type EU/type FU)
885 4505	for flasks 25 ml (max. 49/98)
885 4513	for flasks 50 ml (max. 48/96)
885 4521	for flasks 100 ml (max. 24/48)
885 4556	for flasks 250 ml (max. 17/39)
885 4572	for flasks 500 ml (max. 12/26)
885 4599	for flasks 1,000 ml (max. 8/17)
885 4610	for flasks 2,000 ml (max. 4/9)
885 4629	for flasks 3,000 ml (max. 4/8)
885 4637	for flasks 5,000 ml (max. 2/6)
885 4564	for Fernbach flasks 450 ml (max. 8/15)
885 4600	for Fernbach flasks 1,800 ml (max. 1/6)
885 4640	for Fernbach flasks 2,800 ml (max. 1/6)
	Plastic clamps reinforced with glass fibre (maximum number of clamps for tray type EU/type FU)
885 4700	for flasks 100 ml (max. 24/48)
885 4711	for flasks 250 ml (max. 18/39)
885 4722	for flasks 500 ml (max. 12/26)
885 4733	for flasks 1,000 ml (max. 8/17)
	Hinged racks for test tubes (4 racks max. on tray EU, 8 racks max. on tray FU)
885 3134	for 64 tubes Ø 14 mm
885 3142	for 42 tubes Ø 16 mm
885 3150	for 36 tubes Ø 18 mm
885 3169	for 33 tubes Ø 20 mm
885 3185	for 20 tubes Ø 25 mm
885 3177	for 16 tubes Ø 30 mm
	Hinged racks for centrifugation tubes (4 racks max. on tray EU, 8 racks max. on tray FU)
885 3088	for 42 tubes Ø 16 mm
885 3096	for 36 tubes Ø 18 mm
885 3193	for 33 tubes Ø 20 mm
885 3240	for 16 tubes Ø 30 mm



Reference	Description
885 0321	Holders for microtiter plates, stainless steel for 1 standard 96-well plate or deepwell plate standard plates: max. 12 holders on EU tray, 21 holders on FU tray deepwell plates: max. 9 holders on EU tray, 18 holders on FU tray



886 4497	Sticky tape for universal trays Standard, Width 30 mm, roll of 50 m
886 0416	Premium, Width 30 mm, roll of 10 m, for repeated use

886 4470	Anti-skid layer (not shown) 380×450 mm, for individual cut
----------	--



885 4238	Universal mounting system Basic element type B-2 for tray EU
885 4246	Basic element B-3 for tray FU
885 4254	Clamping rod, type U for mounting systems B-2 and B-3



886 1005	Shaking flasks DURAN, Erlenmeyer type, 3 baffles at 120°, straight rim Erlenmeyer flasks 300 ml, pack of 10
886 1013	Erlenmeyer flasks 500 ml, pack of 10
886 1021	Erlenmeyer flasks 1,000 ml, pack of 10
886 1022	Erlenmeyer flasks 2,000 ml, pack of 10



886 1064	Shaking flasks, DURAN, Erlenmeyer type, 3 baffles at 120°, straight rim, connector GL 14 Erlenmeyer flasks 300 ml, pack of 10
886 1072	Erlenmeyer flasks 500 ml, pack of 10
886 1080	Erlenmeyer flasks 1,000 ml, pack of 10



886 1099	Caps for Erlenmeyer flasks, straight rim Cap Aluminium, pack of 10
886 1102	Cap Stainless steel, pack of 10



886 0998	Shaking flasks, DURAN, Erlenmeyer type, 3 baffles at 120°, narrow neck for plug Erlenmeyer flasks 500 ml, pack of 10
----------	--

Technical Data

Ordering Information

CERTOMAT® RM version with 25 mm orbit:		
230 V/50 Hz	886 2321	CERTOMAT® RM/25 mm
115 V/60 Hz	886 2338	
CERTOMAT® RM version with 50 mm orbit:		
230 V/50 Hz	886 2427	CERTOMAT® RM/50 mm
115 V/60 Hz	886 2435	

Technical data

Mechanical	Shaking speed:	40 to 400 rpm
	Amplitude:	25 mm or 50 mm, convertible
	Accuracy:	±3% of max. value
	Motor:	brushless motor, rotor external
	Suitable trays:	Type E and EU (420 × 420 mm) Type F and FU (800 × 420 mm)
	Adjustment of time:	digital timer up to 98:59 h, continuous
	Adjustment of speed:	digital via keypad
	Display:	Alphanumeric LCD
Electrical	Max. current:	0–8 A/230 V, 1.6 A/115 V
Safety	Protection class:	IP 21
Operation conditions	Temperature:	from +10 °C to +60 °C
	Humidity:	from 10% to 90%, not condensing
Dimensions and Weight	External (L × H × D):	510 × 160 × 545 mm
	Weight:	46 kg

All instruments are delivered without tray and other accessories.

For growing cells or mixing liquids a tray is needed together with additional accessories to hold shaking flasks, separation funnels or tubes.

Sartorius AG
Weender Landstrasse 94-108
37075 Goettingen, Germany

Phone +49.551.308.0
Fax +49.551.308.3289

www.sartorius.com

Sartorius BBI Systems GmbH
Schwarzenberger Weg 73-79
34212 Melsungen, Germany

Phone +49.5661.71.3400
Fax +49.5661.71.3702

www.sartorius-bbi-systems.com

Sartorius North America Inc.
131 Heartland Blvd.
Edgewood, New York 11717, USA

Phone +1.631.254.4249
Toll-free +1.800.3687178
Fax +1.631.254.4253

Sartorius BBI Systems, Inc.
2800 Baglyos Circle
Bethlehem, PA 18020, USA

Phone +1.610.866.4800
Fax +1.610.866.4890

Sartorius Ltd.
Longmead Business Park
Blenheim Road, Epsom
Surrey, KT19 9 QQ, U.K.

Phone +44.1372.737159
Fax +44.1372.726171

Sartorius S.A.
4, rue Emile Baudot
91127 Palaiseau Cedex, France

Phone +33.1.6919.2100
Fax +33.1.6920.0922

Sartorius S.p.A.
Via dell'Antella, 76/A
50011 Antella (FI), Italy

Phone +39.055.63.40.41
Fax +39.055.63.40.526

Sartorius, S.A.
C/Isabel Colbrand 10-12
Planta 4, Oficina 121
Polígono Industrial de Fuencarral
28050 Madrid, Spain

Phone +34.91.3586091
Fax +34.91.3588804

Sartorius Technologies N.V.
Luchthavenlaan 1-3
1800 Vilvoorde, Belgium

Phone +32.2.756.0670
Fax +32.2.756.0681

Sartorius K.K.
KY Building, 8-17
Kitashinagawa 1-chome
Shinagawa-ku
Tokyo 140-0001, Japan

Phone +81.3.3740.5407
Fax +81.3.3740.5406

Specifications subject to change
without notice.

Printed in Germany on paper that has been
bleached without any use of chlorine.

W/sart-000 · G

Publication No.: SB-1013-e05021

Order No.: 85030-514-19