



**CERTOMAT<sup>®</sup> BS-T**  
Programmable  
top loading incubation  
shaking cabinet

## CERTOMAT® BS-T Programmable top loading incubation shaking cabinet

The CERTOMAT® BS-T is a high volume shaking cabinet for all laboratories in microbiology, molecular biology as well as biochemistry, plant physiology and others.

An innovative programming of all parameters is done via a membrane key pad in real time. This control allows to store up to 5 programs with 5 steps each password protected. Via a repeat function, unlimited repetition is possible.

Process safety is maintained during power failure. Time and duration are stored as an alert. The Memory Function restores the last set points after power failure.

Continuous recording for documentation of all parameters is possible via analog out.

The shaking amplitude of 25 mm and 50 mm can be converted.

A built-in cooling as option allows temperatures near and beyond ambient and is needed for the optional illumination unit.

The interior made of polished stainless steel (1.4301) can easily be kept in hygienic conditions.

The standard spill tray collects liquid from broken glass. Tray fixation is done in one motion, safe and easy.

The innovative programming of the CERTOMAT® BS-T allows individual control of temperature, shaking speed and light.

A pre-step allows a cooling period before the start of the incubation program. Cultures are visible through the large double panned window in the lid.

Temperatures at or down to 10 °C below ambient are reached with an optional integrated cooling unit.

Cultivation of phototrophic organisms is possible with the optional illumination unit installed in the lid. The lights are programmable for simulation of day/night conditions.

### Benefits

Programming of all parameters

Stores up to 5 programs

High process safety

Output for continuous recording

Indicates power failure by length and time

Orbit 25 mm and 50 mm can be converted

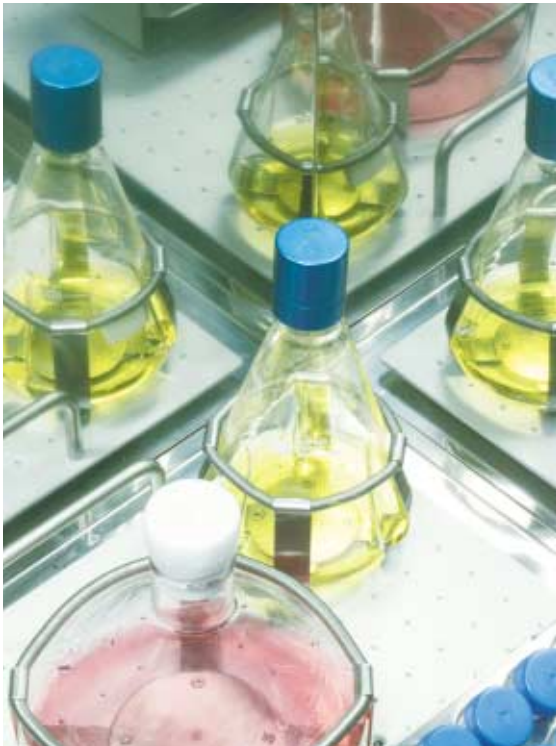
Stainless steel spill tray to protect from damage

Built-in cooling unit optional

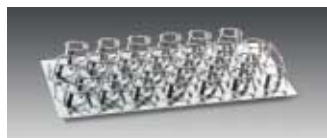
Illumination unit optional

Tray fixation fast and easy

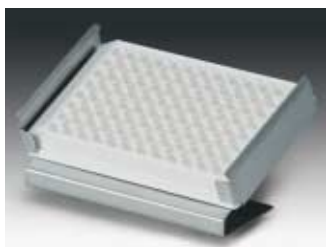
Accepts 6 liter flasks



## Zubehör



Reference	Description
886 1463	Illumination unit for CERTOMAT® BS-T, 5×18 W, individually activated, programmable, only in combination with cooling
886 4489	Support frame, welded sectional frame construction, height adjustable feet
<hr/>	
	<b>Tray Type F (800×420 mm)</b>
885 3738	74 clamps inox for flasks 100 ml
885 3762	40 clamps inox for flasks 250 ml
885 3789	26 clamps inox for flasks 500 ml
885 3800	15 clamps inox for flasks 1,000 ml
<hr/>	
885 3037	<b>Universal tray to be completed with clamps, racks or mounting system</b> Type FU (800×420 mm)
<hr/>	
	<b>Stainless steel clamps, Capacity for tray type FU</b>
885 4505	for Erlenmeyer flasks 25 ml (max. 98)
885 4513	for Erlenmeyer flasks 50 ml (max. 96)
885 4521	for Erlenmeyer flasks 100 ml (max. 48)
885 4556	for Erlenmeyer flasks 250 ml (max. 39)
885 4572	for Erlenmeyer flasks 500 ml (max. 26)
885 4599	for Erlenmeyer flasks 1,000 ml (max. 17)
885 4610	for Erlenmeyer flasks 2,000 ml (max. 9)
885 4629	for Erlenmeyer flasks 3,000 ml (max. 8)
885 4637	for Erlenmeyer flasks 5,000 ml (max. 6)
885 4564	for Fernbach of 450 ml (max. 15)
885 4600	for Fernbach of 1,800 ml (max. 6)
885 4640	for Fernbach of 2,800 ml (max. 6)
<hr/>	
	<b>Plastic clamps reinforced with glass fibre</b>
885 4700	for Erlenmeyer flasks 100 ml (max. 48)
885 4711	for Erlenmeyer flasks 250 ml (max. 39)
885 4722	for Erlenmeyer flasks 500 ml (max. 26)
885 4733	for Erlenmeyer flasks 1,000 ml (max. 17)
<hr/>	
	<b>Hinged racks for test tubes</b> (8 racks max.)
885 3134	for 64 tubes dia. 14 mm
885 3142	for 42 tubes dia. 16 mm
885 3150	for 36 tubes dia. 18 mm
885 3169	for 33 tubes dia. 20 mm
885 3185	for 18 tubes dia. 25 mm
885 3177	for 16 tubes dia. 30 mm
<hr/>	
	<b>Hinged racks for centrifugation tubes</b> (8 racks max.)
885 3088	for 42 tubes dia. 16 mm
885 3096	for 36 tubes dia. 18 mm
885 3193	for 33 tubes dia. 20 mm
885 3240	for 16 tubes dia. 30 mm

**Reference****Description**

885 0321

**Holders for microtiter plates, stainless steel**

for 1 standard 96-well plate or deepwell plate  
standard plates: max. 12 holders on EU tray, 21 holders on FU tray  
deepwell plates: max. 9 holders on EU tray, 18 holders on FU tray



886 4497

**Sticky tape for universal trays**

886 0416

Standard, roll of 50 m, 30×1 mm

886 4470

Premium, roll of 10 m, 30×1 mm, repeated use

Anti-skid layer, 380×450 mm, for individual cut



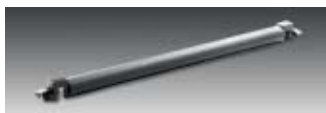
885 4246

**Universal mounting system**

885 4254

Basic element B-3 for tray FU

Clamping rod, type U for mounting systems B-2 und B-3



885 4262

**Mounting system for separatory funnels**

885 4270

(for use with type FU, in combination with type B-3  
basic element)

Type S-1 for 5 separatory funnels 50 and 100 ml

Type S-2 for 3 separatory funnels 250, 500 and 1,000 ml



886 1005

**Shaking flasks, DURAN, Erlenmeyer type,  
3 baffles at 120°, straight rim**

886 1013

Erlenmeyer flasks 300 ml, pack of 10

886 1021

Erlenmeyer flasks 500 ml, pack of 10

886 1022

Erlenmeyer flasks 1,000 ml, pack of 10

Erlenmeyer flasks 2,000 ml, pack of 10



886 1064

**Shaking flasks, DURAN, Erlenmeyer type,  
3 baffles at 120°, straight rim, connector GL 14**

886 1072

Erlenmeyer flasks 300 ml, pack of 10

886 1080

Erlenmeyer flasks 500 ml, pack of 10

Erlenmeyer flasks 1,000 ml, pack of 10

**Caps**

886 1099

Cap aluminium, pack of 10

886 1102

Cap inox, pack of 10



886 0998

**Shaking flasks, DURAN, Erlenmeyer type,  
3 baffles at 120°, narrow neck for plug**

Erlenmeyer flasks 500 ml, pack of 10

## Technical Data

### Ordering information

CERTOMAT® BS-T version with circulation/heating (UH)		
230 V/50 Hz	886 5426	CERTOMAT® BS-T/25 mm
230 V/50 Hz	886 5523	CERTOMAT® BS-T/50 mm
115 V/60 Hz	886 5434	CERTOMAT® BS-T/25 mm
115 V/60 Hz	886 5531	CERTOMAT® BS-T/50 mm
CERTOMAT® BS-T version with circulation/heating/cooling (UHK)		
230 V/50 Hz	886 5620	CERTOMAT® BS-T/25 mm
230 V/50 Hz	886 5728	CERTOMAT® BS-T/50 mm
115 V/60 Hz	886 5639	CERTOMAT® BS-T/25 mm
115 V/60 Hz	886 5736	CERTOMAT® BS-T/50 mm

### Technical Data

Mechanical	Shaking mode: Amplitude: Drive:  Drive control:	orbital 25 mm or 50 mm brushless motor with triple eccentric bearing Microprocessor controlled
Shaking Speed	Range: Adjustment: Indication: Speed accuracy:	40 to 400rpm membrane keypad alphanumeric LCD ±1% of max. value
Temperature	Temperature range: with cooling: Air circulation:	ambient +8 °C to +70 °C ambient -10 °C to +70 °C 180 m <sup>3</sup> /h
Trays	Recommended trays: Maximum load: Mounting:	Type F/FU (420 × 800 mm) all trays with accessories out of Sartorius program Spring-clip snap mechanism
Programming	Parameters: Timing: Programs: Adjustment: Indication:	Speed, temperature, illumination (optional) date, hour, minute up to 5 programs with cycling Membrane key pad LCD, alphanumeric, 4 lines, 20 characters
Operating Environment	Safety class: Admissible temperature:  Relative humidity:	IP 21 from +10 °C to +45 °C max +32 °C with mode cooling from 10% to 90%, not condensing
Documentation	Analog out:	for speed and temperature 0–10 V, optional 0/4–20 mA
Electrical	Power supply: Heating capacity: Cooling capacity:	230 V/50 Hz 650 W 500 W
Dimensions and weight	External (W × H × D): Internal (W × H × D): Weight (without tray):	1150 × 760 × 750 mm 890 × 535 × 595 mm 171 kg

All models are delivered without tray and other accessories

For incubating cells or mixing liquids a tray is needed together with additional accessories to hold shaking flasks, separation funnels or tubes.

Sartorius AG  
Weender Landstrasse 94-108  
37075 Goettingen, Germany

Phone +49.551.308.0  
Fax +49.551.308.3289

[www.sartorius.com](http://www.sartorius.com)

Sartorius BBI Systems GmbH  
Schwarzenberger Weg 73-79  
34212 Melsungen, Germany

Phone +49.5661.71.3400  
Fax +49.5661.71.3702

[www.sartorius-bbi-systems.com](http://www.sartorius-bbi-systems.com)

Sartorius North America Inc.  
131 Heartland Blvd.  
Edgewood, New York 11717, USA

Phone +1.631.254.4249  
Toll-free +1.800.3687178  
Fax +1.631.254.4253

Sartorius BBI Systems, Inc.  
2800 Baglyos Circle  
Bethlehem, PA 18020, USA

Phone +1.610.866.4800  
Fax +1.610.866.4890

Sartorius Ltd.  
Longmead Business Park  
Blenheim Road, Epsom  
Surrey, KT19 9 QQ, U.K.

Phone +44.1372.737159  
Fax +44.1372.726171

Sartorius S.A.  
4, rue Emile Baudot  
91127 Palaiseau Cedex, France

Phone +33.1.6919.2100  
Fax +33.1.6920.0922

Sartorius S.p.A.  
Via dell'Antella, 76/A  
50011 Antella (FI), Italy

Phone +39.055.63.40.41  
Fax +39.055.63.40.526

Sartorius, S.A.  
C/Isabel Colbrand 10-12  
Planta 4, Oficina 121  
Polígono Industrial de Fuencarral  
28050 Madrid, Spain

Phone +34.91.3586091  
Fax +34.91.3588804

Sartorius Technologies N.V.  
Luchthavenlaan 1-3  
1800 Vilvoorde, Belgium

Phone +32.2.756.0670  
Fax +32.2.756.0681

Sartorius K.K.  
KY Building, 8-17  
Kitashinagawa 1-chome  
Shinagawa-ku  
Tokyo 140-0001, Japan

Phone +81.3.3740.5407  
Fax +81.3.3740.5406

Specifications subject to change  
without notice.

Printed in Germany on paper that has been  
bleached without any use of chlorine.

W/sart-000 · G

Publication No.: SB-1014-e05022

Order No.: 85030-514-38